

QuickTrace M series

Solid phase extraction device



The New Quicktrace M Series, Creative Product

Quicktrace M series is a solid-phase extraction device produced by ASHMAR company. The Quicktrace M series solid-phase extraction Device can easily and efficiently extract the required analytes. The Quicktrace M series solid-phase extraction device can achieve all steps of SPE operation (activating, sample loading, rinsing, blow drying, elution, etc.), reduce solvent consumption, ensure recovery rate, and improve repeatability.

User oriented design features

- Simply provide air source and operate without power supply
- With plug in air intake
- Dual gas path design to meet velocity of flow for different applications

Flexible configuration

- Multiple instrument models to meet different applications
- Multiple extraction column racks and collection tube rack configurations
- Can work with instruments such as VortexVap, FSE, VacuoVap, Smaasher, etc

Quicktrace M Series Selection Guide



QuickTrace M8



QuickTrace M48



QuickTrace M96

Sample Quantity	8	48	2×96
Sample/solvent volume	by column	by column	by column
Small column specifications	1/3/6/10/12/20ml	1/3/6/10/12ml	N/A
Collection tube volume	0~50ml	0~40ml	0~2ml
Order Number	see page 4 for details	see page 5 for details	see page 5 for details



Quicktrace M Series

Technical Data

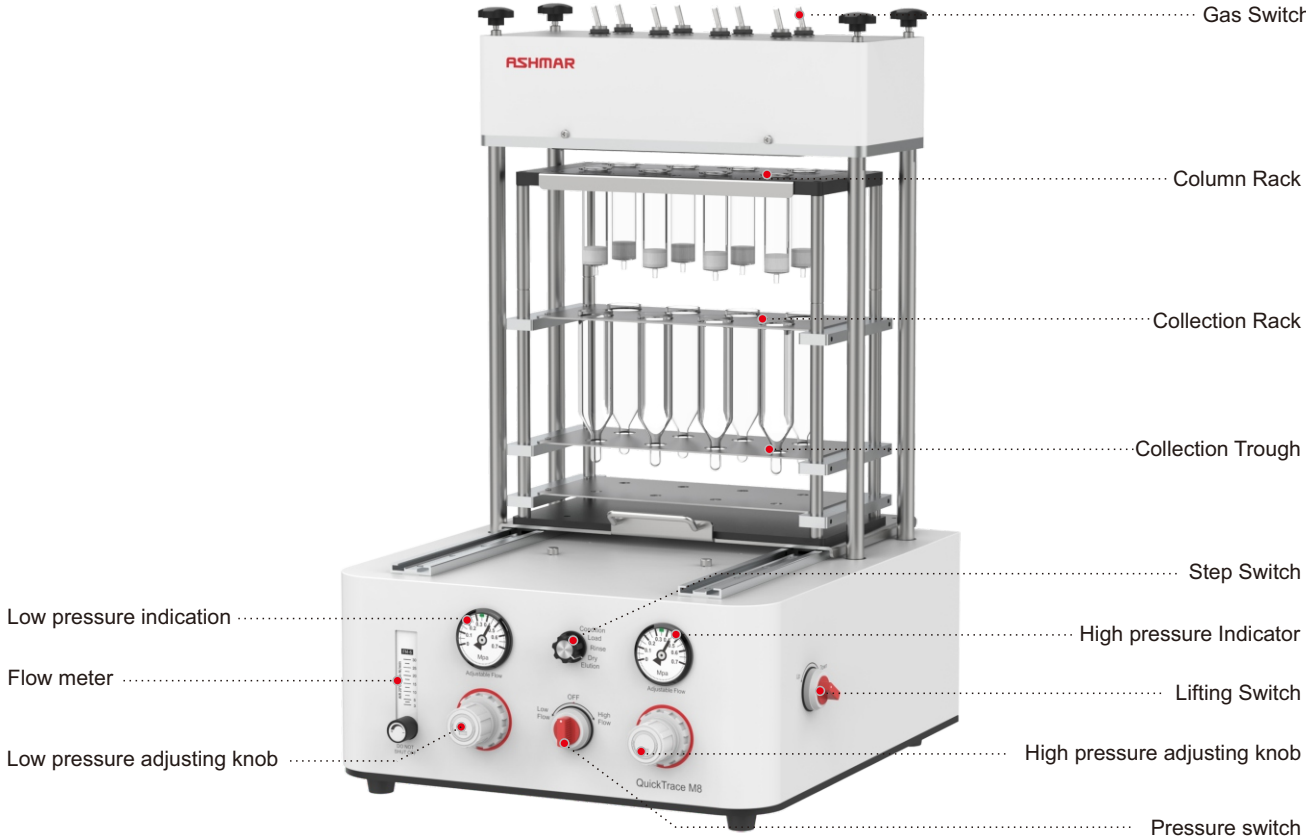
System Host

Gas source	It is recommended to use inert gas, such as nitrogen
Maximum allowable intake pressure	0.7MPa
Maximum noise	75dB

Others

Operating temperature	18°C~32°C
Storage temperature	0~60°C
Humidity	20%~90%RH
Certificate	CE

System Annotation



Quicktrace M Series

Ordering Information

Order number	Product Description
--------------	---------------------

Basic System

081001	M8 positive pressure solid-phase extraction device
481001	M48 positive pressure solid-phase extraction device
961001	M96 positive pressure solid-phase extraction device

Solid phase extraction column

C00032	1ml Extraction column C18
C00033	3ml Extraction column C18
C00029	6ml Extraction column C18
C00034	10ml Extraction column C18
C00035	12ml Extraction column C18
C00036	20ml Extraction column C18
C00037	1ml Extraction column HLB
C00038	3ml Extraction column HLB
C00039	6ml Extraction column HLB
C00040	10ml Extraction column HLB
C00041	12ml Extraction column HLB
C00042	20ml Extraction column HLB

Order number	Product Description
--------------	---------------------

M8 configuration

A00128	M8 1ml column rack
A00129	M8 3ml column rack
A00130	M8 6ml column rack
A00131	M8 10ml column rack
A00132	M8 12ml column rack
A00133	M8 20ml column rack
A00134	M8 50ml quantitative concentration collection rack
A00135	M8 25x150ml collection rack
A00136	M8 20x200ml collection rack
A00137	M8 20x150ml collection rack
A00138	M8 16x125ml collection rack
A00139	M8 16x100ml collection rack
A00140	M8 Waste reagent collection trough

M48 configuration

A00141	M48 1ml column rack
A00142	M48 3ml column rack
A00143	M48 6ml column rack
A00144	M48 10ml column rack
A00145	M48 12ml column rack
A00146	M48 20x200ml collection rack
A00147	M48 20x150ml collection rack
A00148	M48 16x125ml collection rack
A00149	M48 16x100ml collection rack
A00150	M48 Waste reagent collection trough

M96 configuration

A00151	M96 deep hole plate kit
A00152	M96 shallow hole plate kit
A00270	M96 Waste reagent collection trough

ASHMAR[®]

— S C I E N T I F I C —



Ashmar Scientific (Shanghai) Co., LTD

Hot line: 400-000-8187

Shanghai

Address: 12th Floor, Building 2, 248 Guanghai Road, Minhang District, Shanghai, China

Nanjing

Address: Room 2001, Building 1, No. 32 Fengzhan Road, Yuhuatai District, Nanjing, China

Germany

Address: STAU 123, BÜRO S-03, 26122 OLDENBURG, GERMANY

Singapore

Address: 103 TAMPINES STREET 86#03-06 THE ALPS RESIDENCES SINGAPORE(528576)

Part Number: FC0005.V4